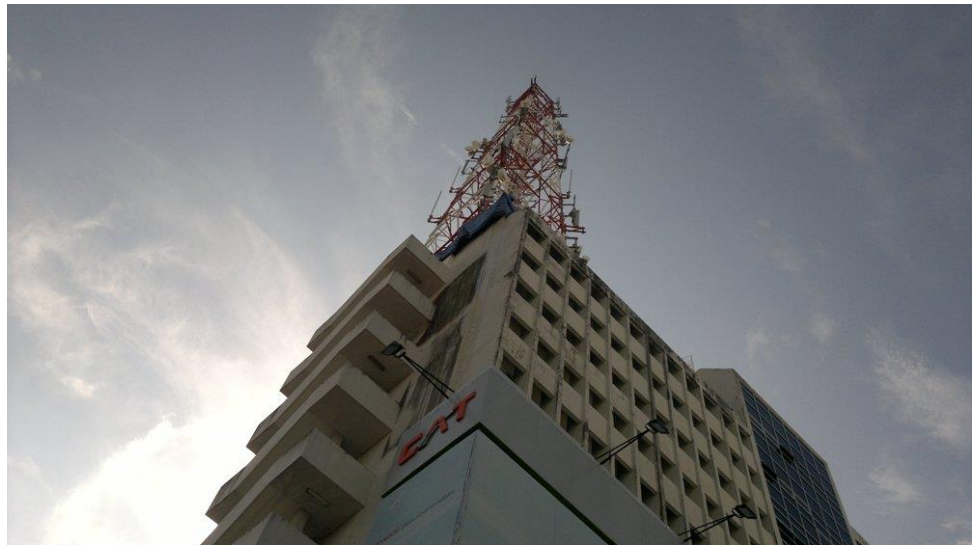


SUPPORT BEAMS – CAT TELECOM – THAILAND

CAT TELECOM PUBLIC Company Limited is the state-owned company that runs Thailand's international telecommunications infrastructure, including its international gateways, satellite, and submarine cable networks connections.

At the end of 2011, the beams that support the **CAT Telecom Tower** in Phuket province were re-galvanized using **ZINGA** which was overcoated with **ZINGALUFER** for additional protection.



System:
Surface preparation: Wet blasting
ZINGA 1 x 80 µm DFT
(by brush & roller)
ZINGALUFER 1 x 80µm DFT
Local topcoat