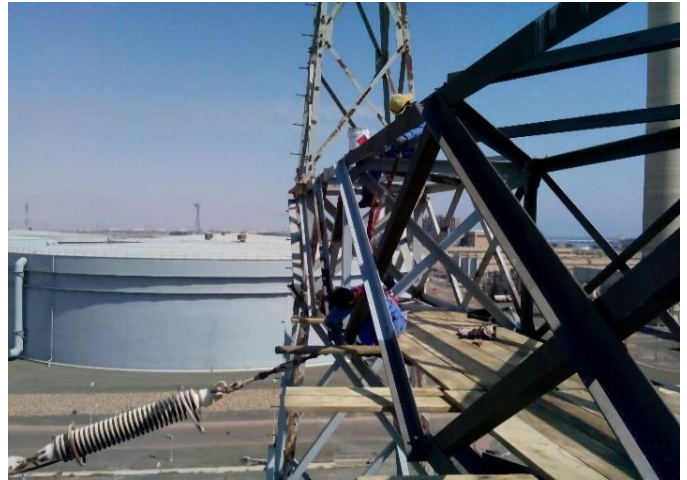


HIGH TENSION PYLONS – SALINE WATER CONVERSION CO. SAUDI ARABIA

ZINGA has been specified by the **Saline Water Conversion Co. (SWCC)** to be applied on steel structures of the 380 KV electrical bridge at their Shoaiba desalination plant. It consists of 3 pylons (40 meter high) and 2 bridges between them (each 20 meter long). The total surface area was 3000 m². The surface was blasted using copper slag and **ZINGA** was applied by brush and roller up to 180 µm DFT in 2013 & 2014.



Pylons prior to **ZINGA** treatment



Application of **ZINGA** with brush



Copper slag



Pylons during treatment



Final result 1 year after application

System:
Surface preparation:
Blasting with Copper slag to SA 2.5
ZINGA up to 180 µm DFT