

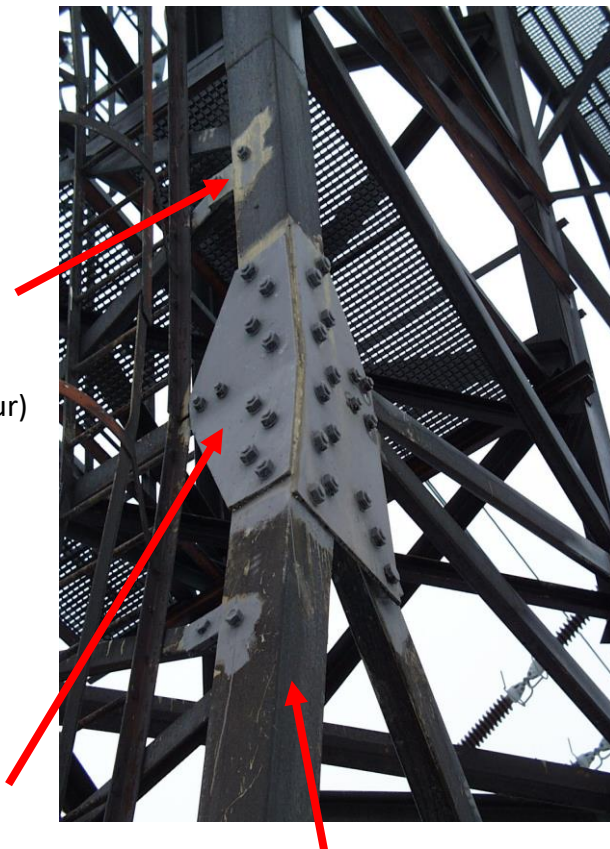
## TRANSFORMER STATION of SLAVETICE – CZECH REPUBLIC

**ZINGA** was used on the pylons of the Slavetice Transformer Station, to repair the Atmofix anti-corrosion protection.

**ZINGA** was applied basically on the inner surfaces between 2 metal plates. The problem was that the corrosion between the metal plates caused such pressure that the bolts broke. In most cases they applied **ZINGA** also on the outer surface of the metal plate. All other surfaces, that look black, are still covered with the old protection layer Atmofix. The application of **ZINGA** started in 2000 and was continued until 2002. These pictures were taken during an inspection in January 2003.



HS-Elastcom  
or Rezdico  
(brown colour)



**ZINGA**  
on and under  
the plate

Atmofix

On some joints **ZINGA** is covered by the Czech paints HS-Elastcom or Rezdico. These paints were not intended as a protection but were used to obtain a similar colour as Atmofix.



System:  
**ZINGA 2 x 40 µm DFT**