

London Eye Barrage Pontoons – City of London – U.K.

The **London Eye**, or the **Millennium Wheel**, is a cantilevered observation wheel on the South Bank of the River Thames in London. The structure is 135 metres (443 ft) tall and the wheel has a diameter of 120 metres (394 ft). When it opened to the public in 2000 it was the world's tallest Ferris wheel. It attracts over 3 million visitors annually.



To protect the **London Eye** from the busy boat traffic on the Thames there are 10 barrage pontoons placed on both sides of the wheel. The coating on these pontoons were in a quite bad state and needed to be refurbished. In November 2014 the **ZINGA Distributor** in the U.K., **MGDUFF International** received the order to apply 2 **ZINGA** systems on the 10 pontoons.





The Principal & Manufacturer of the pontoons was **ISLAND MARINE INT.** (Dover).
The pontoons were transported to **GILLINGHAM MARINA** (Gillingham, at the Medway river mouth)
where they were blasted and coated between April and July 2015.



System:

Surface preparation : Gritblasting to SA 2.5
with Rz 50 to 70 μm

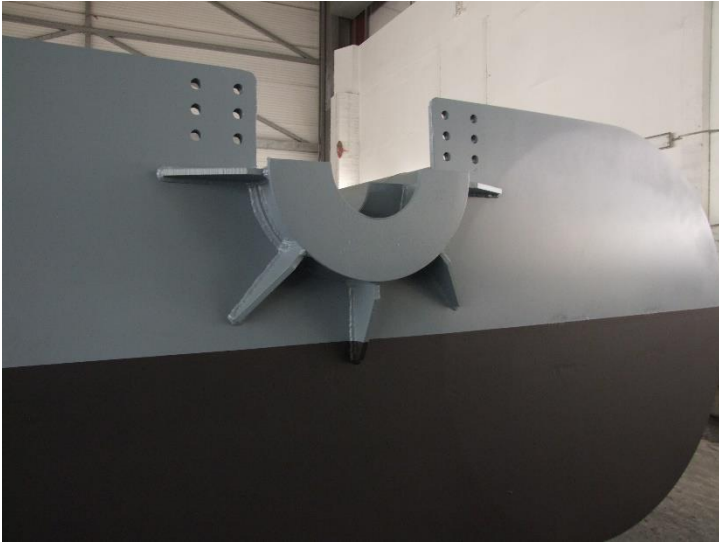
On all surfaces: ZINGA 80 μm DFT

Topcoat on immersed half: ZINGATARFREE 2 x 100 μm DFT

Topcoat on upper half: ZINGACERAM PU 60-80 μm DFT



Stripe coating on
sharp edges and
in corners



The pontoons were delivered to the client on 30 July 2015.

A 10 years ZINGA performance guarantee was delivered to the client.

