

# REFERENCES

WWW.ZINGA.COM.SG



REFERENCE NO:

SG - MY -

SBS TRANSIT

BASEPLATES

– EN - 09/04/2021

**SBS TRANSIT**  
**BASEPLATES**  
**PROJECT**

**1/3**



# BASEPLATES PROJECT



## THE CLIENT - SBS TRANSIT

SBS TRANSIT IS A MULTI-MODAL, LEADING PUBLIC TRANSPORT OPERATOR IN SINGAPORE OPERATING BUS, RAIL AND TAXI SERVICES.

## CORRODED BASEPLATES

INSPECTIONS ARE CONDUCTED PERIODICALLY ON ALL RAIL ASSETS IN THE METRO SYSTEM.

CORRODED BASEPLATES THAT HAVE BEEN IDENTIFIED, ARE REPLACED AND SENT TO A WAREHOUSE WHERE THEY ARE SCRAPPED.

IN ORDER TO REDUCE WASTAGE AND OPTIMISE THE USAGE OF THESE ASSETS, AN INNOVATIVE SOLUTION NEEDS TO BE FOUND.

## CAUSE OF CORROSION

CORROSION ON BASEPLATES TYPICALLY OCCUR IN AREAS WHERE THERE IS WATER PONDING – PRIMARILY CAUSED BY LEAKAGES IN THE TUNNEL.

## THE ZINGA SOLUTION

THE ZINGA SOLUTION PROVIDES AN OPPORTUNITY TO REHABILITATE CORRODED BASEPLATES AND ELIMINATE THE NEED TO DISCARD USEFUL ASSETS.

ZINGANIZATION WILL PROMOTE A MORE SUSTAINABLE SOLUTION IN THE INDUSTRY – UPHOLDING ITS CAPACITY FOR MAXIMUM CORROSION PROTECTION AT ANY GIVEN TIME.

2/3

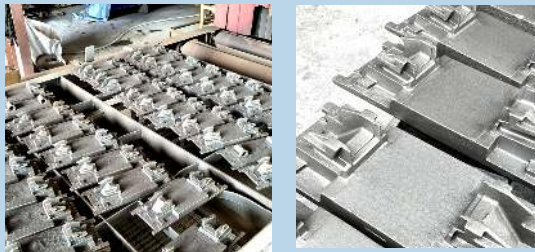


# BASEPLATES PROJECT



**BASEPLATES PICKED UP**  
USING A FLAT BED  
TRAILER, THE BASEPLATES  
WERE PICKED UP FROM  
THE CLIENT'S WAREHOUSE  
(22 PALLETS)

**STEP  
01**



**STEP  
02**

**ASSEMBLED IN  
FABRICATION YARD**  
BASEPLATES ARE  
ASSEMBLED NEATLY FOR  
THE AUTOBLAST MACHINE  
IN THE FABRICATION YARD

## BLASTING PROCESS

BASEPLATES ARE PUT THROUGH  
THE AUTOBLAST MACHINE USING  
ANGULAR METALLIC  
ABRASIVES – ADHERING TO  
PROPER SURFACE  
PREPARATION STANDARDS  
(SA 2.5)

**STEP  
03**



## ZINGANIZATION

BASEPLATES ARE  
ZINGANIZED USING AN  
AIRLESS SPRAY GUN. TWO  
COATS OF 60 $\mu$  OF ZINGA IS  
APPLIED ONTO THE  
SURFACE. (120 $\mu$  IN TOTAL)

**STEP  
04**



## ASSEMBLY AND PACKING

ZINGANIZED BASEPLATES  
ARE DRIED TO PERFECTION  
AND ARE THEN  
ASSEMBLED AND PACKED  
FOR THE CLIENT – READY  
FOR USE

**STEP  
05**

